

MODIFYRE THEME CAMP HANDBOOK 2021



Dear aspiring or returning Theme Camp Lead,

Modifyre is a curious thing to become a part of. For one week of the year, we're essentially running an experiment in participatory democracy. The truth is, we on the Event Production Team don't run the show. As an organisation, the team can advocate for the sort of event we'd like to see, but ultimately it's up to YOU as the main content creators of our event to build an event that is fun, inclusive and safe.

This guide is just that - a guide. It's not a bible, but some suggestions, based on experience and our shared vision for Modifyre. We hope you'll work with us to create the magic and the madness that is a burn, and help us inspire radical creativity, changemaking, discussion and acceptance within our community.

Thanks in advance for your time, effort and creative vision, we couldn't do it without you!

Burn bright,
The Bug



BURN Arts, Inc and the Modifyre Community wish to acknowledge the Traditional Custodians of the Country upon which Modifyre takes place, the Bigambul and Kambuwal Peoples. We honour their Ancestors and pay our deepest respects to their Elders, past, present and emerging.

We extend that respect to all First Nations People, for they hold the memories, the traditions, the culture and hopes of Aboriginal and Torres Strait Islander peoples across the nation. We honour and respect their continued cultural and spiritual relationship to their Traditional Lands, Seas and Waters and recognise their unique and valuable contribution to society.

Sovereignty was never ceded.

WHAT IS A
THEME
CAMP?

GUIDING
PRINCIPLES

CREATING
YOUR
THEME CAMP

DESIGNING &
PLANNING

CREATING A
SAFE &
EQUITABLE
SPACE

FIRE
SAFETY

DURING
THE
EVENT

FINANCING
YOUR
THEME CAMP

WHAT IS A THEME CAMP?

A THEME CAMP IS AN INTERACTIVE, INCLUSIVE AND PARTICIPATORY SPACE CREATED BY THE COMBINED EFFORTS OF PARTICIPANTS FOR THE BENEFIT OF OTHER PARTICIPANTS.

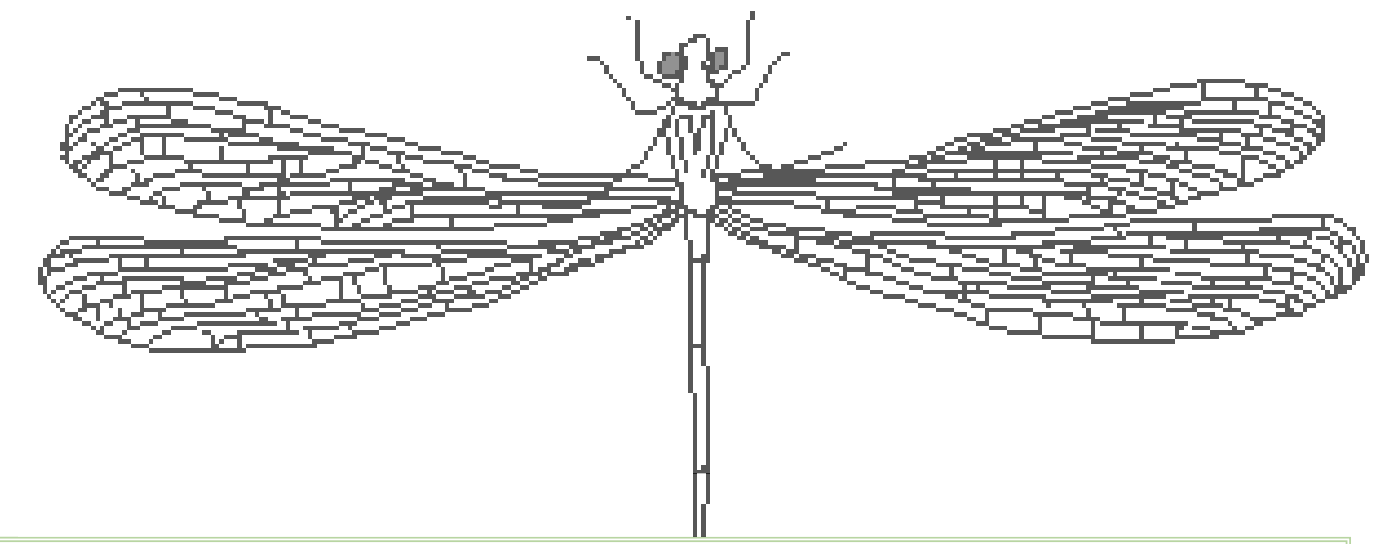
THEY ARE THE SOCIAL CORE OF ANY BURN, BRINGING VIBRANCY AND VARIETY.

THEY ARE A HOME WITHIN A HOME FOR ALL PARTICIPANTS.

Theme camps are essential to creating the decentralised experience that burns offer- the option for participants to try different things and discover oneself in the process.

Creating a theme camp requires commitment from a group of individuals willing to devote their time, energy and resources to create an immersive world and interactive experience for fellow burners. They are a direct expression of the principles of communal effort, participation and gifting. Anyone is welcome to create or join a theme camp. There is no idea too big, too small, or too far-fetched.

The ideal theme camp creates a visually stimulating presence, providing communal space and opportunities for unexpected interaction. Collaboration is strongly encouraged, this may result in theme camp villages rather than many very small theme camps.



WHY A HANDBOOK?

This guide is a living document, a continual work in progress; designed to be a compilation of all the information required to design, build and operate a successful theme camp at Modifyre each year, plus some tips and tricks from event organisers past and present.

Considerable energy, time and resources are required to create a theme camp. It requires careful planning to ensure that we fulfil the obligations of our government permits, insurers and land owners, whilst still experiencing the enormous satisfaction that comes with operating a successful space. This handbook will allow you to get familiar with your responsibilities and duties as a theme camp

Whether you are a new or returning theme camp, we need to be mindful of burn out. The best way to prevent burn out is through preparation and delegation. You are strongly encouraged to use your network and our community to create the support that you need.

If you are a new theme camp, consider asking an existing theme camp lead to be your mentor. In this way you can gain first hand from their experiences and knowledge.

CIVIC RESPONSIBILITY

We value civil society. Community members who organise events should assume responsibility for public welfare and endeavour to communicate civic responsibilities to participants. They must also assume responsibility for conducting events in accordance with local, state and federal laws.



PARTICIPATION

Our community is committed to a radically participatory ethic. We believe that transformative change, whether in the individual or in society, can occur only through the medium of deeply personal participation. We achieve being through doing. Everyone is invited to work. Everyone is invited to play. We make the world real through actions that open the heart.



RADICAL SELF-EXPRESSION

Radical self-expression arises from the unique gifts of the individual. No one other than the individual or a collaborating group can determine its content. It is offered as a gift to others. In this spirit, the giver should respect the rights and liberties of the recipient.



RADICAL SELF-RELIANCE

Burning Man encourages the individual to discover, exercise and rely on his or her inner resources.



GIFTING

Modifyre is devoted to acts of gift giving. The value of a gift is unconditional. Gifting does not contemplate a return or an exchange for something of equal value.



DECOMMODIFICATION

In order to preserve the spirit of gifting, our community seeks to create social environments that are unmediated by commercial sponsorships, transactions, or advertising. We resist the substitution of consumption for participatory experience.



EACH ONE, TEACH ONE

As a self-reliant community, we believe the responsibility of spreading our culture lies with each and every one of us. All of us are custodians of our culture - when the opportunity presents itself, we pass knowledge on.



GUIDING PRINCIPLES

Modifyre's ethos is built on a series of twelve key concepts which act as guidelines for the worldwide Burning Man Regional Network. As such, the event may be understood as a celebration of a way of life lived consistently with these principles.

The twelve principles are intended not as a dictate of how people should be and act, but as a reflection of the community's ethos and culture as it has organically developed since Burning Man's inception.

COMMUNAL EFFORT

Our community values creative cooperation and collaboration. We strive to produce, promote and protect social networks, public spaces, works of art, and methods of communication that support such interaction.



CONSENT

Considered as the "11th Principle" by some, consent respects the autonomy of the individual, who has the right to make their own choice about their own body, property, personal space and privacy.



RADICAL INCLUSION

Anyone may be a part of Modifyre. We welcome and respect the stranger. No prerequisites exist for participation in our community.



IMMEDIACY

Immediate experience is, in many ways, the most important touchstone of value in our culture. We seek to overcome barriers that stand between us and a recognition of our inner selves, the reality of those around us, participation in society, and contact with a natural world exceeding human powers. No idea can substitute for this experience.



LEAVE NO TRACE

Our community respects the environment. We are committed to leaving no physical trace of our activities wherever we gather. We clean up after ourselves and endeavour, whenever possible, to leave such places in a better state than when we found them.



CULTIVATING THE PRINCIPLES

The Principles are not rules - they exist to guide our decision making and exemplify our shared goals, which work together to complement and complete each other. A good burner keeps all of the principles in mind throughout the event.

Much debate happens in burner spaces around which activities may or may not contravene the principles. However, when deciding how to conduct yourself at any one moment, the goal is not to pit the principles against each other, try to balance them, or decide which is more important in the moment (e.g. if debating whether someone should turn down their volume, Radical Self Expression is often pitted against Inclusivity, Consent and Civic Responsibility) - this point of view means that you're essentially deciding how much of each is willing to be sacrificed in each situation.

There's no limit to the principles- self-expression and civic-responsibility are not finite concepts. The goal is to hold them all and create them all to the best of your ability with the mental

and physical resources that you have (more of everything! abundance!) And if you're having to meaningfully sacrifice one of them for your activities, we encourage you to use some of that burner creativity that we're famous for to problem-solve a different and interesting way to achieve the experience you're intending.

SUNSHINE +
RAINBOWS?

We love the diversity of "vibes" that a burn can hold, and understand that some camps thrive on anarchistic ideologies, aiming to present a challenge to participants. A burn doesn't mean it has to all be sunshine and rainbows!

However, anarchism is no excuse for exclusivity, abuse, or lack of safety. If your schtick is belligerent, it works best if everyone's in on the joke.

CREATING YOUR OWN THEME CAMP

NAMING YOUR THEME CAMP

Please stay mindful of our Decommodification principle.

A camp's name should not be named after a commercial enterprise, product or brand.

Whilst we encourage you to make use of recycled materials to build your camp please ensure that logos and names are properly concealed.

WE ENCOURAGE AS MANY CAMPS AS POSSIBLE TO REGISTER...

...so we can best address everybody's wants and needs.

Registration allows us to:

- Locate you in an area suited to your camp.
- Reserve space and grant some of your crew early access to get set up

- Promote your shindig(s) on social media
- Mark your location on the site map (for all to find said shindig(s))
- Connect you with other Theme Camps, to coordinate events and share resources

- Share information about your camp via the event guide about access, adult content, family friendly etc.

- **Registration is essential for camps wanting placement, are intending to bring fire or amplified sound, or have a large engineered structure.** If you are intending to bring these elements, we ask that you fill in the appropriate details on the registration form.

- Being that we are still a small event, we treat each camp on a case-by-case basis and work through any specific needs or regulations as they arise. We place camps according to sound, size, types & times of activities, and numbers of campers.

- We try to locate camps in areas suited to their needs, to minimise the potential for conflict.

WHAT'S YOUR CAMP'S PURPOSE?

Theme camps can be created to facilitate a wide variety of experiences; creative, educational, or functional. Some of the best Theme Camps cover multiple bases with what they bring.

Creative: Let your mind go wild and bring an unforgettable creative experience to your fellow burners! This could incorporate electronic or live music, a themed or immersive experience such as entering a science fiction fantasy world or a 1930's cocktail bar, showing films, performance art, theatre, crafting etc.

Educational: Why not bring a theme camp that educates others on topics that you're passionate about?

Burning Man has theme camps dedicated to educating the masses (and other theme camps) around consent, indigenous worldviews, cooking, sexuality, fire art and a whole lot more.

Functional: We're a do-ocracy, which means that when we see a gap that we think should be filled, we do it ourselves! Your Theme Camp could feed people, keep them warm, ensure that they look fabulous, or provide services such as mobility vehicles, bikes, massages, quiet spaces, kids or teens camps, an alcohol-free space or anything that would fulfil other participant's needs.

THEME CAMP COMPLIANCE & CONTACT

The event production team and management committee work hard to obtain the necessary permits and approvals and insurance for this event.

With this in mind, it is a requirement that all theme camps at Modifyre are designed, constructed and removed afterwards in such a manner that they cause no harm or damage to either the patrons or the environment (Civic Responsibility!).

Your theme camp must also nominate a "Competent Person" during registration, who will jointly share the responsibility and legal liability for ensuring all compliance requirements are met during design, construction, operation/exhibition and pack-down. They are also the individual who is responsible for communicating between the theme camp crew and event production team.

Your camp needs to pass the Safety Assessment test onsite prior to your theme camp being open to burners. This ensures safety and compliance and that the camp has been designed and constructed in accordance with the event permits and insurance.

We require each camp to complete the following daily checklist and maintain their camp to prevent harm to people or the environment. You can find an example of this checklist on [page 28](#) of this guide.

The Burner Safety & Health Team will visit to help encourage safety awareness and verify that this checklist is completed by midday each day. Before you leave the Modifyre site, please return the completed form to Modifyre HQ.

Please ensure that all of the individuals in your crew read the Survival Guide for participants before they arrive.

DESIGNING & PLANNING YOUR THEME CAMP

EACH THEME CAMP MUST AIM TO BE RADICALLY SELF- RELIANT.

You'll need a plan covering all the necessities:

- power
- water
- building supplies
- building equipment

Don't forget to include the private camp spaces where your crew will cook themselves breakfast and escape the camp activities when they aren't participating.

INSURANCE

As a theme camp, you are covered by Modifyre's Public Liability Insurance (PLI), so you do not have to get PLI for your activities at the burn (unless you are planning to do fire-performance).

However, we recommend that if you are holding events of a substantial size as a group outside of Modifyre, such as fundraisers, that you incorporate so that you can get your own PLI as a legal entity.

This means that no one person is financially liable for the safety of your participants.

Please note that our insurance does not cover equipment, volunteer or work cover.

LEGAL STATUS

Please remember that, where the law is concerned, you are running a public venue which is considered an autonomous entity and not just a subset of Modifyre.

This means that you have the same safety & access responsibilities as we do, or any public event does.

APPROVALS - ENGINEERING & ELECTRICAL

Depending on the size and elements of your camp, we may ask you to obtain approvals from licenced engineers or electricians.

MOOP (MATTER OUT OF PLACE)

We strongly encourage you to have an effective Leave No Trace plan before you arrive. This includes a plan for setup (to mitigate MOOP in advance), and a plan for pack down. You can refer to the Survival Guide for some ideas for creating a LNT Plan.

Your site will be inspected by an Earth Guardian before all of your members leave site. Giving a few camp members a MOOP Sweeping shift on the last day will minimise the efforts of those last standing, and ensure they aren't held back at the end of the event to complete your camp's Leave No Trace responsibilities.

You and your crew also need to bring your own cups, bowls, plates and cutlery; disposables are strongly discouraged. This is a BYOC (Bring Your Own Cup) and non-glass event so leave your finest crystal at home - if you are operating any kind of bar, remind and encourage all barflies to bring their own cups instead of resorting to disposable ones. The same goes if you're serving food (this is why burritos are fantastic- no need for a plate!). There's no need to provide bins at your theme camp - participants are responsible for their own waste.

If you're running something like a bar or food service, sort your waste as you go by

setting up separated recycling and compost collections.

If there's flooring in your cooking/service area, it will also catch most of the MOOP as it's being handed over.

Our Earth Guardians team will happily take your cans if you don't crush them (they will take them to the container refund scheme and use the proceeds to fund environmental initiatives at Modifyre), and they have plans for a local compost heap too. Touch base with them on-site to find out how they can help you minimise your waste, or chat to them in advance for advice!

BIO-SECURITY

Being that we're in the middle of a State Forest, which has the same protections as a National Park, biosecurity is a real concern- the last thing our site needs is more noxious weeds!

It is therefore imperative that we make sure that no contaminated soil is coming in from other sites.

If you're running a theme camp that has a large tent structure, please inspect and hose it down BEFORE bringing it to site.

ACCESS

We at Modifyre believe that those with diverse abilities have a lot to contribute to our community, and encourage you to strive to create an accessible space at your theme camp.

From a legal standpoint, we all have the responsibility to do whatever is reasonably/financially practical to create an accessible space. Often the small efforts we make to enhance accessibility are great not just for those with a disability, but also for those with a pram, a raging hangover, or those that just get overwhelmed easily.

We also believe that supporting equity of access goes a long way to demonstrating our inclusive community culture, and has a meaningful knock-on effect in terms of enhancing the welcoming energy of our event beyond those it directly affects.

For us, the goal is not just inclusivity alone or about providing extra services to a few; the goal is to give all of our participants equal opportunity to contribute to this community that we build together.

Here are some simple tips and tricks for creating an accessible camp:

LINKS

[The mobility camp at Burning Man!](#)

[Introduction to invisible disabilities:](#)

- Carpets over the lip of a bell tent/ entranceway to allow wheels over it, and you can dig cords and horizontal poles into the ground quite easily

- Ramps: if you need to install a ramp, try to make it as long as is practical, and at least 85cm wide

- Doorways: ideally, the wider the better, but a minimum of ~130cm is generally accessible

- Wide, clear paths within the space (rather than an otherwise lovely maze of goods to weave through)

- If your camp is a no shoes/no mud zone, you may wish to bring a few bristle brushes, etc., to clean someone's tyres at the entrance

- Seating/rest stops in between your Theme Camp and the next give those who need to take it in stages an opportunity to rest (bonus points if the rest stops look radical!)

- Quiet/low light/chill zones allow those who get overstimulated a reprieve

- Is seating accessible and included in the activities?

- Signage (clear, large font if possible) showing directions from your camp to the next, and from your camp to the accessible toilets, is great.

Bonus points for announcing what your camp can and cannot accommodate accessibility-wise (e.g. “quiet space located here”, “strobe lighting in use”, “low light”, “uneven surfaces”)

- Is your theme camp suitable for children? Does it involve risque materials or content? Signage to indicate this may be useful!
- Suitable lighting for after dark: unless you are going for a low-light vibe, try to have the area lit well enough that it remains navigable for those with vision impairments.

And remember: not all disabilities are visible!

SOUND

Amplified sound is a central feature of any burn event, and we recognise the considerable skill and hard work that goes into producing a quality sound camp.

However, sound also has the potential to make the greatest impact on our neighbours, as well as our fellow campers.

Proper management of sound is thus critical to the survival and continued growth of our event.

It is our mission to work together with sound camps to ensure the party stays alive, so if you're planning to lay down some sick beats, let us know and let's make it happen!

GENERATORS

You should first consider environmentally friendly energy solutions (such as solar panels), but if you do choose to bring and/or share a generator, please be considerate of your fellow campers by following these guidelines:

- Bring the quietest generator you can afford, and the smallest that will meet your actual needs.
- Larger generators are more difficult to transport, use more fuel and create more pollution
- Don't run your generator late at night or early in the morning.
- Place the generator as far from other camps as possible.
- If necessary invest in an acoustic enclosure or baffle
- Make sure people can't trip over any power cords
- Talk to your neighbours!
Please think of others when placing your generator.
- It should be as far from other camps as possible to minimise noise disturbance and noxious exhaust, and should be securely located so that people can't trip over power cords.
- Be mindful of the possibility that it may rain heavily.
- All generators need a separate RCD if not already part on the generator

SIGNAGE & NOTICE BOARDS

A noticeboard in the front of your camp is a great way to let people know what is happening at your camp.

The Event Guide will also include a map showing where to find your camp, and any further info you've provided about your camp and schedule.

THINK LOCAL...

Part of what makes a particular burn unique (and avoid becoming a “cookie-cutter” burn) is the local theme camps.

What can our Queensland/Northern New South Wales theme camps offer that can't be found anywhere else?

How does our weather, location, culture and attitudes inform what we create together?

DO-OCRACIES

A do-ocracy is an organisational structure in which individuals choose roles and tasks for themselves and execute them. Responsibilities attach to people who do the work, rather than elected or selected individuals. It's also the way things run at Modifyre, for most theme camps, and in lots of grassroots community movements. If you see something that needs to be done, do it! If you feel the need to criticise the way it's being done, jump in and do it better!

Do-ocracies are a model which are designed to enhance participation, which is why they work for us. However, they're also a double-edged sword. You will likely find in your “leaderless”, non-hierarchical organisational model, that unofficial leaders will still naturally emerge.

Though we all love those capable champions that emerge, perhaps the more introverted or less confident members of your crew need some extra invitations and support to step up?

And we always need to be careful that we don't begin to value team members based solely on physical productivity. At Modifyre, we're all about skill-sharing, and we value all sorts of contributions.

You also might consider enacting an accountability structure. And don't worry, it can still be non-hierarchical-take it as an opportunity to experiment together and find what works best for you and your crew (and let us know how you go!).

LINK

[Leaderless leadership & decentralisation at The Borderland \(the scandinavian burn\)](#)

CREATING A SAFE & EQUITABLE SPACE

Running a Theme Camp means that you are responsible for creating a space that folks of all sorts feel safe to self-express in. If someone feels physically unsafe, discriminated against, or is experiencing predatory behaviour, self-expression is the first thing to disappear, and it's definitely not inclusive.

The way a space is designed and executed can be powerful, so we came up with some ideas and opportunities for enhancing psychological safety for diverse folks, which you can think about when designing your camp, and the way you'll run it at the burn:

Will people need an "induction" of any kind on entering your camp?

Some spaces need this more than others (for example, if you are encouraging sexual expression), while for some, it's less important. You can also be really creative with this - it doesn't have to be a lecture! How is the way someone is greeted at the entrance going to inform their behaviour and expectations on entering?

Can you advocate for the vibe and behavioural standards you want through decor/signage?

Is there an opportunity to include an Acknowledgement of Country anywhere in your programming/signage?

How do you want participants to experience your space?

Jotting this down as a group means you can refer to this list throughout the design process, to use as a decision making "funnel". This means that all of your team members are on the same page, and the elements of your space will work together cohesively to create your goal.

How is the space "hosted"? You want to create a space that feels safe and secure without people feeling watched or policed. A personable host or two that is not afraid to be assertive when they need to be can go a long way to making this happen. How might the way you host the space enable or disincentivise toxic behaviour?

It's your space, and you get to decide who attends and what behaviour is appropriate.

You're not obligated to host anyone that is making others feel unsafe (thought: sometimes radical inclusivity may mean uninviting someone who is disincluding others...). However, we encourage communication and education wherever possible. Don't be afraid to call a Ranger to help facilitate these discussions if you need to.

Having confident members of your camp express themselves first signals to others that it's a safe space to do so, and what your camp is all about.

Getting different sorts of folks involved in your camp means that you'll receive a variety of voices in the design process and make a broader group of people comfortable as a result.

Not all contributions have to be physical contributions to be valid and valuable.

Similarly, diverse lineups encourage a broader range of people to attend and feel included.

Research!

Ask your friends and community members to spitball ideas with you, to hear a variety of opinions. Not everyone may agree, but it means that you can make better informed decisions.

Posting in Modifyre social channels about your camp could even prepare folks for the experience before arriving!

Radical Self-Awareness!

Observe your camp's attendees during the event- what do you notice? What sort of person is enjoying themselves? Is anyone dominating the space? If

put in another's shoes with a different life experience, what might they think of the space?

Does this decor item, outfit or word make me feel icky? General Rule: If the item or look in question is traditionally used by a community or culture other than your own to express religious beliefs, political statements, or respected status within that culture, leave it alone.

And lastly, how will you talk with each other if you think there's room for improvement within your crew?

Are individuals given opportunities to air grievances of any kind? Is there a space created for discussions of cultural topics at your meetings, or are you solely focused on content or logistics? Many people will refrain from voicing concerns if not given the opportunity to do so safely.

REMEMBER THAT OUR RANGERS ARE ON-HAND TO ASSIST WITH COMMUNITY ISSUES REGARDING MENTAL HEALTH. THEY'RE HERE TO HELP.

LINK

[Burning Man Journal: Diversity & Radical Inclusion: Marlon Williams on the 10 Principles' Racial Limits](#)

CONSENT

A few years ago, Modifyre formalised Consent as our official 11th Principle! Being the principle content-creators at our event, and Theme Camps have a great opportunity and responsibility to promote consent culture. The golden concept is that it's easier to do the hard work to educate each other about consent before the issue occurs, rather than the infinitely harder task of mediating consent violations later!

Modifyre offers support for a variety of community issues through our Rangers, including consent violations. However, wherever possible, we encourage our participants to be consent-literate and a healthily self-regulating community. It's a great idea to inform your crew that's hosting your space on bystander

None of us get everything right all the time.

The discussions that result are often the most important part.

Modifyre is an experiment in temporary community, so don't be afraid to be creative and see what works for your particular crew.

Good luck on your endeavours and let us know what creative means you come up with!

intervention and what might happen if a consent violation occurs amongst your crew or at your venue.

That said, if you see a serious consent violation or have one reported to your camp, the best course of action is still to find a ranger immediately.

LINKS

[Resources, guides and posters](#)

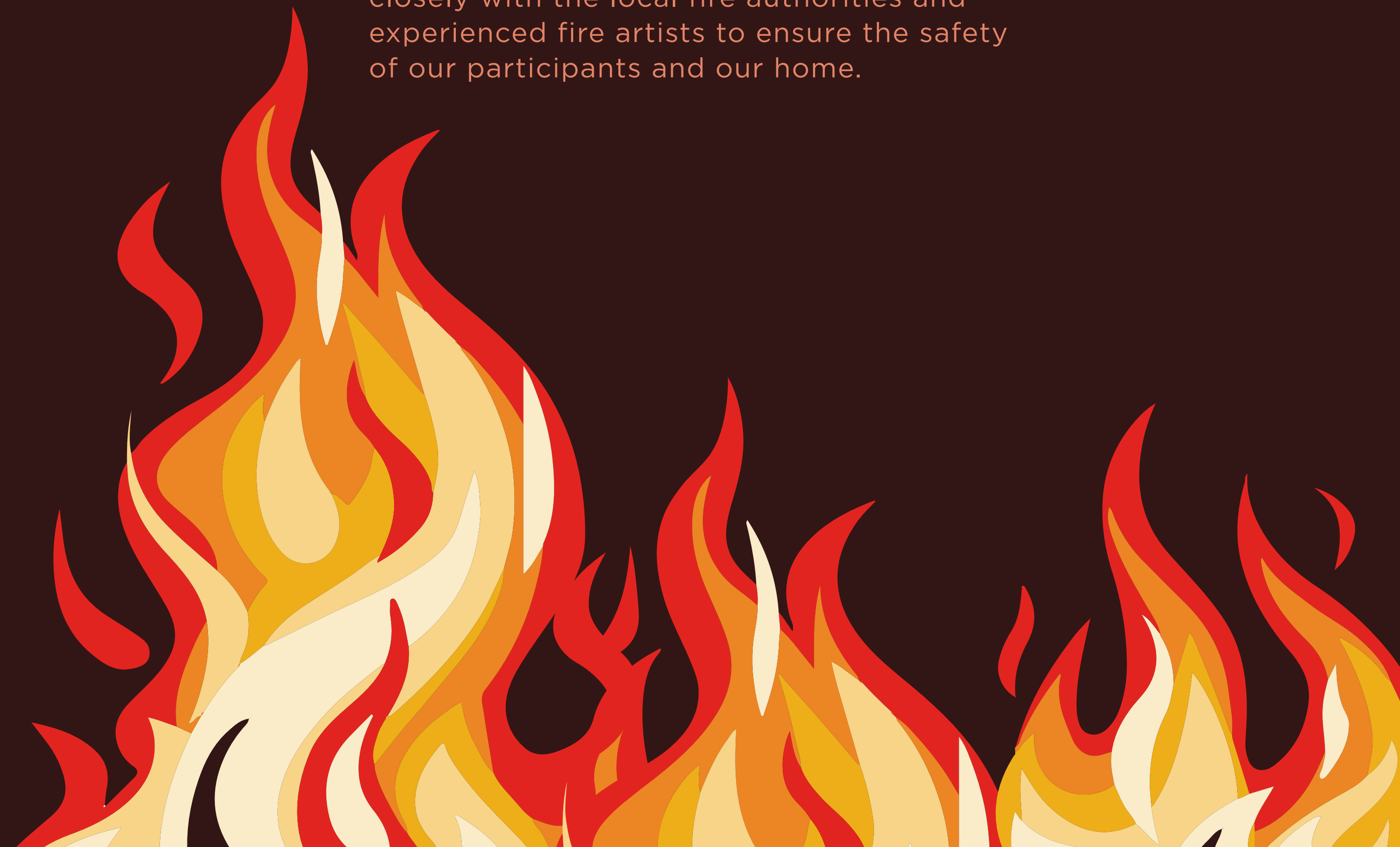
[History of consent movements at Burning Man:](#)

[Introductory podcast on building consent culture amongst your community, and mediating consent violations \(includes "what to do if your friend gets called out"\):](#)

FIRE SAFETY

We love playing with fire, all kinds of fire - effigies, flame effects, torches, twirlers - you name it. Heck, we don't call it a Burn for nothing! But we also take fire safety very seriously.

F.L.A.M.E., our fire safety team works closely with the local fire authorities and experienced fire artists to ensure the safety of our participants and our home.



OPEN FIRE GUIDELINES

- Open fire consists solely of simple burning of solid fuels away from the ground surface and within appropriate fireproof containment (e.g., burn barrels, braziers, etc).
- You must obtain approval from the Fire Safety team prior to lighting any open fire.
- Burn barrels / braziers or other containers should be secured against tipping over, and constructed in a way that the bottom surface is at least six inches from the ground to prevent baking or scarring.
- No burn barrels or other open fire shall be left unattended. At least one (sober) camp member should be designated fire tender and be within visual distance at all times. If found unattended while lit, open flames or burn barrels will be extinguished. Repeat offences will result in a revocation of approval.
- All fires must be monitored at all times for changes in wind speed and direction. Action must be taken as required to prevent embers and sparks being thrown.
- The area around any open fire must be clear of flammable or combustible materials, including but not limited to: wood, paper, fuel, tents, dry vegetation or other camps, to a distance of 7m.
- It is the responsibility of participants / camps to ensure the appropriate fire safety equipment is on hand. This includes at least 10L water, fire extinguishers and fire blankets.
- Open fire or burn barrels must be extinguished at the request of any Ranger and/or Emergency Services personnel.

CAMP FIRES & BURN BARRELS

The site is surrounded by dense bushland, so bush fires are a real concern for our hosts and our neighbours irrespective of the season.

Personal fire pits or burn barrels are not permitted.

That said, **you may apply for your Theme Camp to have a burn barrel through the registration process!**

If your theme camp wants to have an open flame fire, it must be installed in a safe location with minimum 3m radius of bare ground around the fire, plus a minimum 6m distance between the fire and any tent or structure.

Please note, only registered theme camps are permitted to have open fires.

It is a requirement that a minimum of 2.3kg ABE fire extinguisher and fire blanket be near any open fire.

FLAME EFFECTS

If you are incorporating flame effects (liquid or gas) into your theme camp, artwork or performance, you **MUST** register with F.L.A.M.E. to ensure you comply with the relevant requirements.

As a minimum, the following applies to flame effects.

If you have any questions, contact us at flame@modifyre.org.

FIRE PERFORMANCE

If you'd like to spin at Modifyre, please get in touch with the F.L.A.M.E. team and let them know you're coming.

You'll get all the lowdown on burning safely at the event, and they'll get you involved with the official fire celebrations - the opening ceremony, the Bug burn, and the Temple burn.

Contact: flame@modifyre.org

FLAME (LPG) EFFECTS GUIDELINES

- All flame effects must be inspected on site and approved by the Fire Safety Team. You must obtain approval from the Fire Safety team prior to lighting any flame effect.
- All flame effects should be safe and secure - fittings and other relevant parts should undergo daily safety checks.
- Once lit, flame effects must be monitored at all times by a (sober) camp member.
- The area around any flame effect must be clear of flammable or combustible materials, including but not limited to: wood, paper, stored fuel, tents, dry vegetation or other camps, to a distance of 7m
- All liquid and flammable materials must be stored and used as per the Fuel & Hazardous Materials Storage Guidelines.
- Flame effects must be extinguished at the request of any Ranger and/or Emergency Services personnel.

FIREWORKS & PYROTECHNICS

Personal fireworks, flares, pyrotechnics and firearms are strictly prohibited.

Possession of these items violates both common sense

and the stipulations of our hosts, the property owners.

Offenders will be evicted from the event.



DURING THE EVENT

GATES OPEN AT NOON THE 7TH OF JULY.

IDEALLY, ALL THEME CAMPS SHOULD BE
READY AND OPEN AT THIS STAGE.

EARLY ENTRY

Registered Theme Camps are allowed early access to the site from Monday 5th July 2021.

All Theme Camp crew must vacate the site by sundown on Tuesday 13th July 2021.

We ask that all early arrival Theme Camps try to have non-essential vehicles removed from the main camping area or tightly parked inside their allotted area before gates open on Wednesday 7th July.

You must register crew names for early entry before Sunday 20th June by sending an email with your list of names to: themecamps@modifyre.org

All Theme Camp crew must have a ticket to access the site. If your name is not on the early entry list then you will have to wait until gates open on Wednesday 7th July.

ALCOHOL

Please make sure that anyone running a bar can recognise, and is prepared to refuse service, to anyone with an underage wristband.

ON-SITE SAFETY

There will be a daily self-checklist for all theme camps to ensure compliance, safety and adherence to the regulations.

This will be provided to you via email prior to the event, and explained in detail at the Theme Camp Information Session meeting before the event.

When on site, our Burner Safety & Health team will visit you daily, to collect the checklist from your nominated contact.

CAMPING

The Theme Camp area now occupies nearly all of the 'prime' camping areas at Modifyre.

This is a deliberate strategy to incentivise participants to join Theme Camps. As Theme Camp leaders it is your responsibility to quantify and organise who is camping with you and to let us know so we can allocate you enough space to accommodate your public and private camping areas.



FINANCING YOUR THEME CAMP

THEME CAMP GRANTS

As a crowd funded event without commercial sponsorship, Modifyre is not in a position to provide complimentary tickets or artists fees to Theme Camps.

However, in order to recognise the central role our Theme Camps play in promoting and perpetuating Burner culture both at the event and throughout the year, grants are available to facilitate your efforts. This year, we've endeavoured to make the process easier and more transparent.

We are also committed to supporting theme camps through other means including promotions and facilitation of fundraising events, logistics and transport, and access to equipment and relevant resources as required.

All grants are funded directly by Modifyre ticket sales and fundraising activities. If you are interested in receiving a grant, please complete the "Art and Theme Camp grants form" during the period that it is open, please also indicate this on your theme camp registration form.

Please get in touch if you have any questions about theme camp grants.

HOLDING YOUR OWN FUNDRAISERS

As a Theme Camp, you're encouraged to hold your own fundraising activities to help finance your contribution to the Burn.

We hope that you continue to endeavour to create decentralised, inclusive, decommodified events that our community loves, and that can help to those who've never attended a burn, spread what we're all about!

BURN Arts can often help with equipment needs, sample event management plans and contacts to local performers, etc. So get in touch if you would like some assistance!

CAMP DUES

It's common practice for Theme Camps to collect "Camp Dues" from their members, in a form of small-scale crowdfunding.

COVID 19 GUIDE

The impact of coronavirus and the new regulations Modifyre needs to comply with affects all theme camps. Here is what you need to know for 2021.

CAMP CLEANING & MONITORING

- Each theme camp is responsible for ensuring hand sanitiser is available. This does not need to be an excessive amount as sanitiser will also be available in general areas (e.g. toilets, medics) and people are expected to be self-reliant. But please supply some at all times within your camp. Alcohol-based hand sanitiser must contain at least 60% ethanol or 70% iso-propanol.
 - Establish a cleaning protocol for your camp, to be done at least daily but adjust the frequency to the level of risk with your camp. Special attention should be given to surfaces that are frequently touched ie. countertops. Increased frequency is required during high usage times (for example, at meal times in food service areas).
 - Ensure that the members of your camp practice good hygiene, in particular washing hands prior to hosting an event.
 - Physically clean surfaces using detergent and water, or disinfectant.
- Consider wearing gloves. If you use a disinfectant, clean the surface first then use disinfectant or use a combined detergent and disinfectant product.
- Disinfectants will not kill germs if the surface has not been cleaned first. Make sure the disinfectant has enough time in contact with the surface, is used at the right concentration and is applied to a clean, dry surface. Rinse the surface after disinfection if needed to prevent any residue from being left behind.
 - Ensure you have enough cleaning products to last the duration of the entire event for your camp. General cleaning products are not supplied by the event.
 - Should there be a confirmed COVID-19 infection on site, additional cleaning measures will be required. Instructions will come from the event management team if this is required.

CAMP DESIGN.

- Keep all spaces open where possible e.g. do not pull down the sides of marquees.
- Understand your capacity. Theme camps need to adhere to an occupant density one person per 2 square metres, calculated based on the amount of usable space. For more information refer to section 1.2.1 Calculating Site Capacities in the Industry Framework for COVIDSafe events in Queensland.
- Monitor and encourage 1.5 metre physical distancing and the correct occupant density in your camps.
- Get creative with signs in your theme camp for capacity and social distancing.
- Encourage a one-way flow of foot traffic in high density areas
- Mark entry and exit point of your theme camp with signs, particularly if you are a theme camp that has dancing.

FOOD BUFFETS

We are a restricted event, and cannot allow self service buffets. You are however able to have designated servers so you can provide food to people. Note they cannot help themselves behind the table!

CAMP MANAGEMENT

- Each camp needs to nominate a person who is responsible for implementing the recommendations in this Theme Camp Covid-19 Guide. They may be asked to do a short online training course prior to the event, depending on government recommendations.
- Daily camp checks will be conducted by the event organisers.
- The event organisers are not responsible for enforcing the capacity and attendance in theme camp areas. This is the responsibility of each theme camp.
- If you suspect that a person is showing symptoms of COVID-19, advise them to visit the medics. Escalate to the event management team if you are still concerned.

NOTE:

IT IS NOT YOUR RESPONSIBILITY TO COLLECT TRACING INFORMATION FOR VISITORS TO YOUR CAMP. THIS IS MANAGED BY THE EVENT TEAM.

BURN BRIGHT! (AND SAFELY)

MODIFYRE 2021 – THEME CAMP DAILY SAFETY CHECKLIST

Camp Name: _____ Camp Name: _____
 Camp Start-Date: _____ Camp End-Date: _____
 Camp Contact: _____
 Safety Champion: _____
 Camp First Aider: _____

Although everyone is responsible for their own safety at MODIFYRE, you have a duty of care (Civic Responsibility) to ensure the safety of the people who visit your camp, and protect the environment from harm. To meet regulatory requirements and to ensure we create a safe event, we require each camp to complete the following daily checklist and maintain their camp to prevent harm to people or the environment. The Safety Team will visit to help encourage safety awareness and verify that this checklist is completed by midday each day.

Before you leave MODIFYRE, please return the completed form to MODIFYRE HQ.

	Wed Jul 7		Thu Jul 8		Fri Jul 9		Sat Jul 10		Sun Jul 11		Mon Jul 12	
	Status	Initial	Status	Initial	Status	Initial	Status	Initial	Status	Initial	Status	Initial
CERTIFICATES												
1.01 Certificate of Approval is prominently displayed												
1.02 Generator labelled with camp name, emergency contact												
STRUCTURAL												
2.01 Structure is erected as per manufacturer's specifications												
2.02 Structure erected on stable ground with secure footings												
2.03 Structures are pegged to ground and cannot lift/fall in wind												
2.04 Ground pegs are all capped to prevent spike injuries												
2.05 Structural supports/materials are in good condition and secure												
2.06 Hanging/elevated equipment is fixed and will not fall												
2.07 Cladding/walls is tight and secure												
2.08 Guy-lines are in good condition, tight, secure and lit where req'd												
ELECTRICAL												
3.01 RCD Safety Switch installed between power source and users												
3.02 RCD tested and confirmed as functional												
3.03 Power extension cables & cords are tested/tagged, or new												
3.04 Extension cables, cords and plugs are insulated, secure and tight												
3.05 Electrics are inaccessible to public												
3.06 Electrics protected from water (rain, flood, spills)												
3.07 Generator has earth spike installed into ground (if fitted)												
3.08 Lights/Equipment protected from water (rain, flood, spills)												
3.09 Generator & switchboard secure, tagged, labelled												
FIRE SAFETY												
4.01 Fire extinguishers accessible for generator and theme camp												
4.02 Burn barrels and fire features have a valid Burn Permit												
4.03 Fire blanket in kitchen (if applicable)												
4.04 No open candles or flames inside or within 5 metres of tents												
4.05 Candles are enclosed in sand-weighted glass-jars												
4.06 Cigarette Butt Collection Cans												
SAFE EXITS												
5.01 Exits unobstructed												
5.02 Primary exits wide (for enclosed tents/marquees >24m2)												
5.03 Exits not covered by flammable curtains												
5.04 Exits discharge to open space												
LIGHT & SOUND												
6.01 Emergency lighting provided, tested and found functional												
6.02 Adequate illumination provided												
6.03 PA sound levels checked and agreeable to adjacent camps												
6.04 Speakers facing direction as approved per layout plan												
HYGIENE												
7.01 Waste is secured in waste and recycling bins												
7.02 Camp has hand-washing facilities												
7.03 Camp is clean, tidy and hygienic												
7.04 Camp waste is not accumulating, open to air/flies or wind												
OTHER												
8.01 First Aid kit available in camp												
8.02 Vehicles not parked on roads/access ways												
8.03 Generator placed in safe, secure position away from other camps												
SPECIAL CONTROLS ADOPTED FOR CAMP												
S.01												
S.02												
S.03												
S.04												
S.05												
CORRECTIVE TASK LOG												
C.01												
C.02												
C.03												
C.04												
C.05												
MODIFYRE SAFETY TEAM VERIFICATION												



THANK YOU

IN ADVANCE FOR BRINGING
YOUR THEME CAMP -
IT WOULDN'T BE A BURN
WITHOUT YOU!

BURN BRIGHT
AND SEE YOU ON THE
PADDOCK!

EMAIL US
THEMECAMPS@MODIFYRE.ORG